

- Puertas
- 1. del mar
- 2. de Francia
- 3. de Navarra
- 4. del arrabal
- 5. de San Sebastián

RECINTO AMURALLADO Y ARRABAL · SIGLO XVIII
RENTERIA · ERRETERIA
 F. López-Roldán · J. Ubarrechena

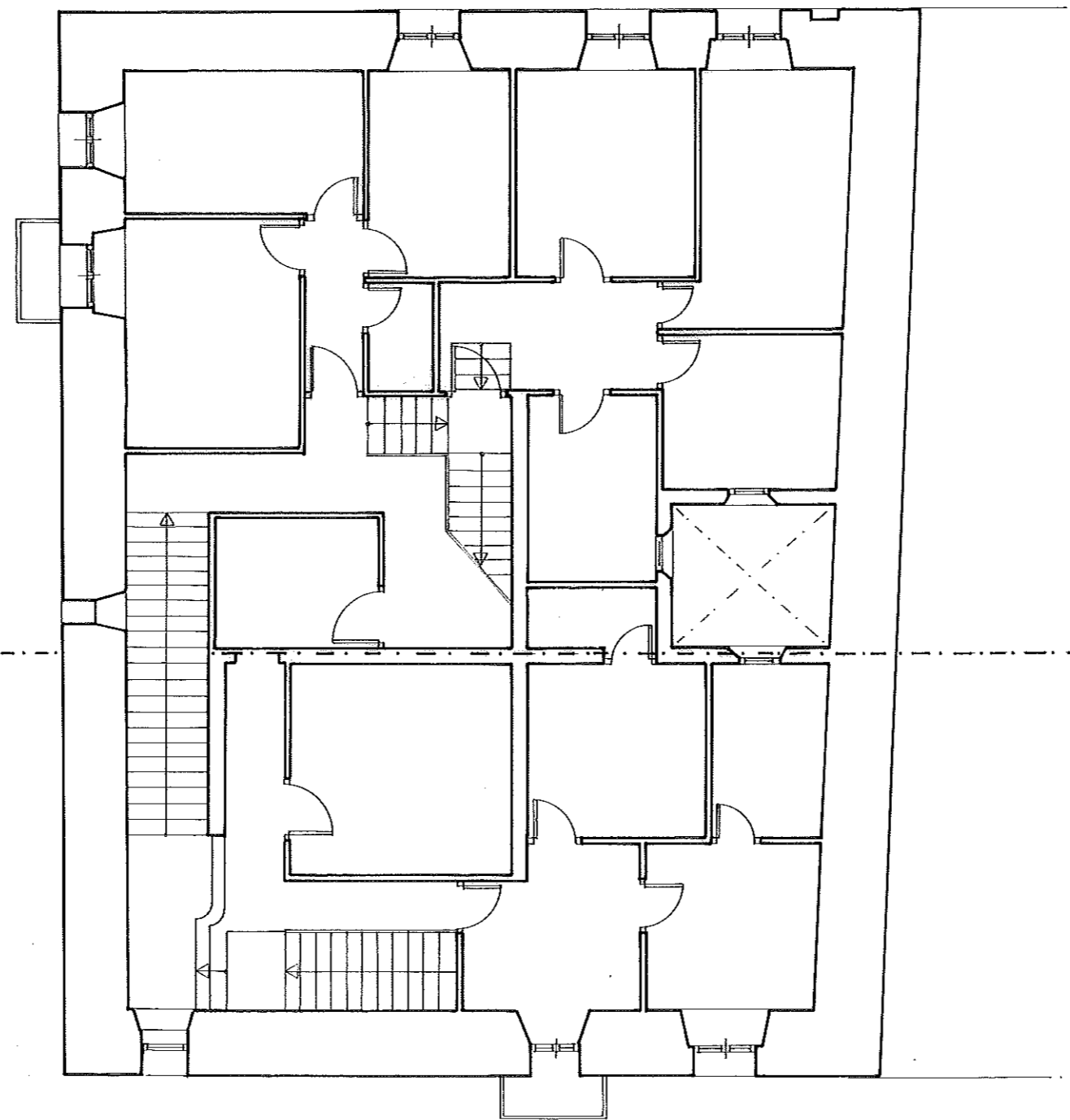


- A. Ayuntamiento
- B. Casa del Capitán
- C. Morrontxo
- D. Pº Zubiaurre
- E. Ermita Magdalena

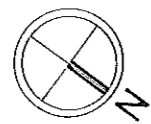
MORRONTXO

planta segunda

planta primera

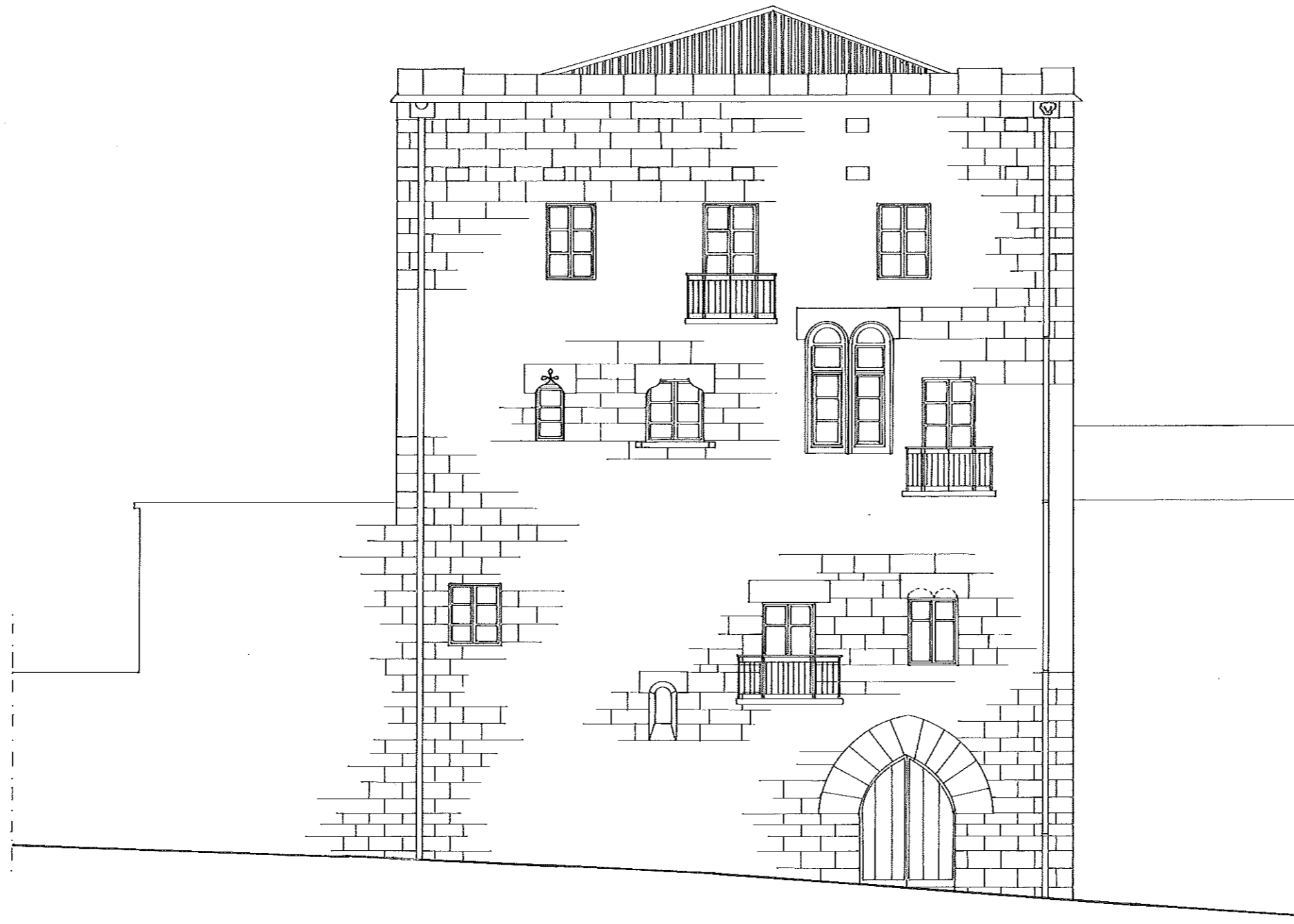


plano n° 3



F. López-Roldán · J. Ubarrechena
0 m. 10 m.

MORRONTXO

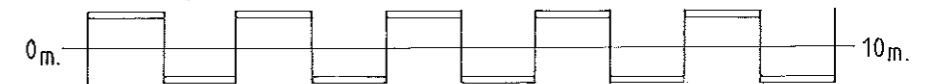


plano nº4

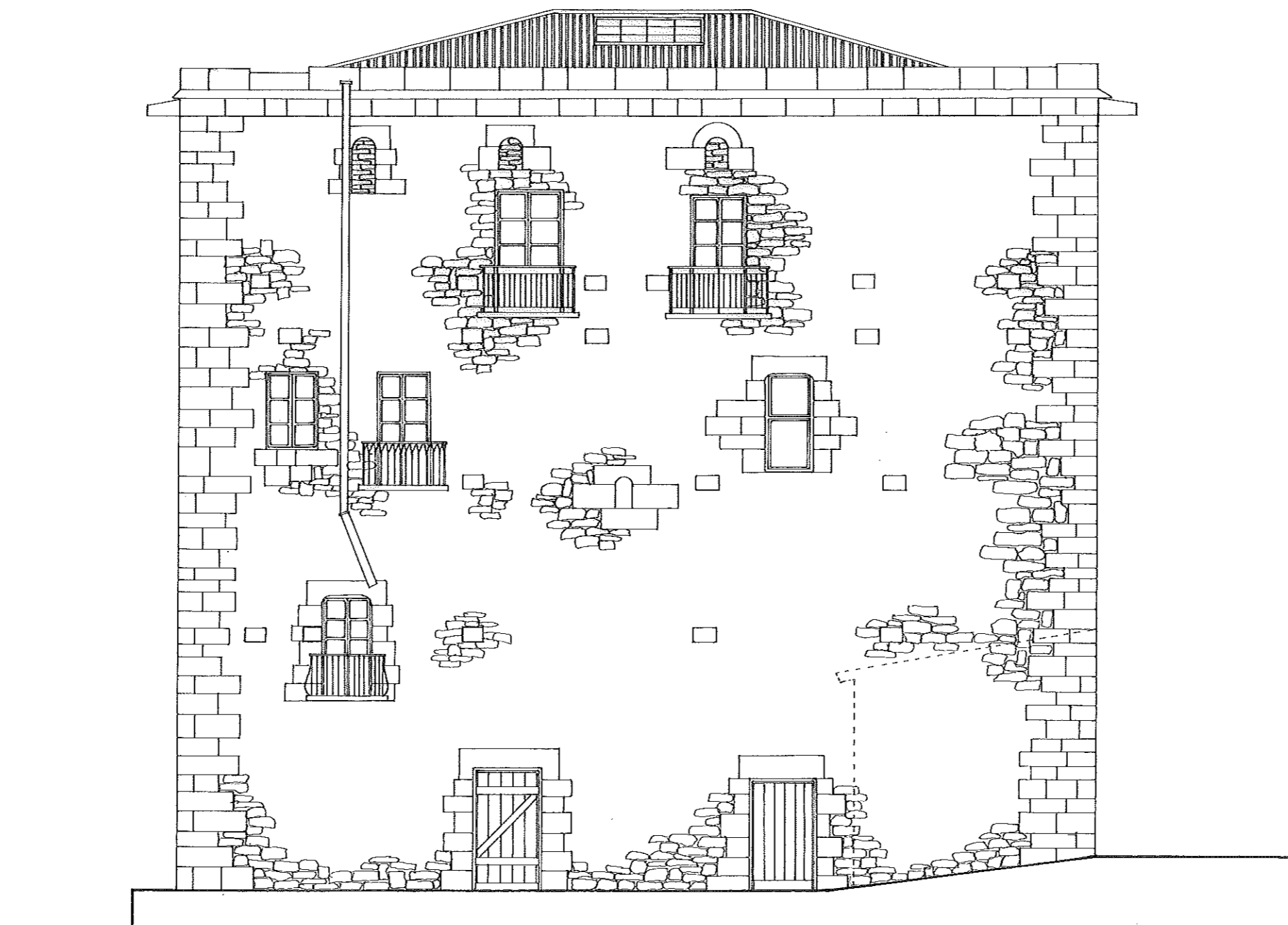
alzado principal · este

c.\ de Arriba

F. López-Roldán · J. Ubarrechena



MORRONTXO

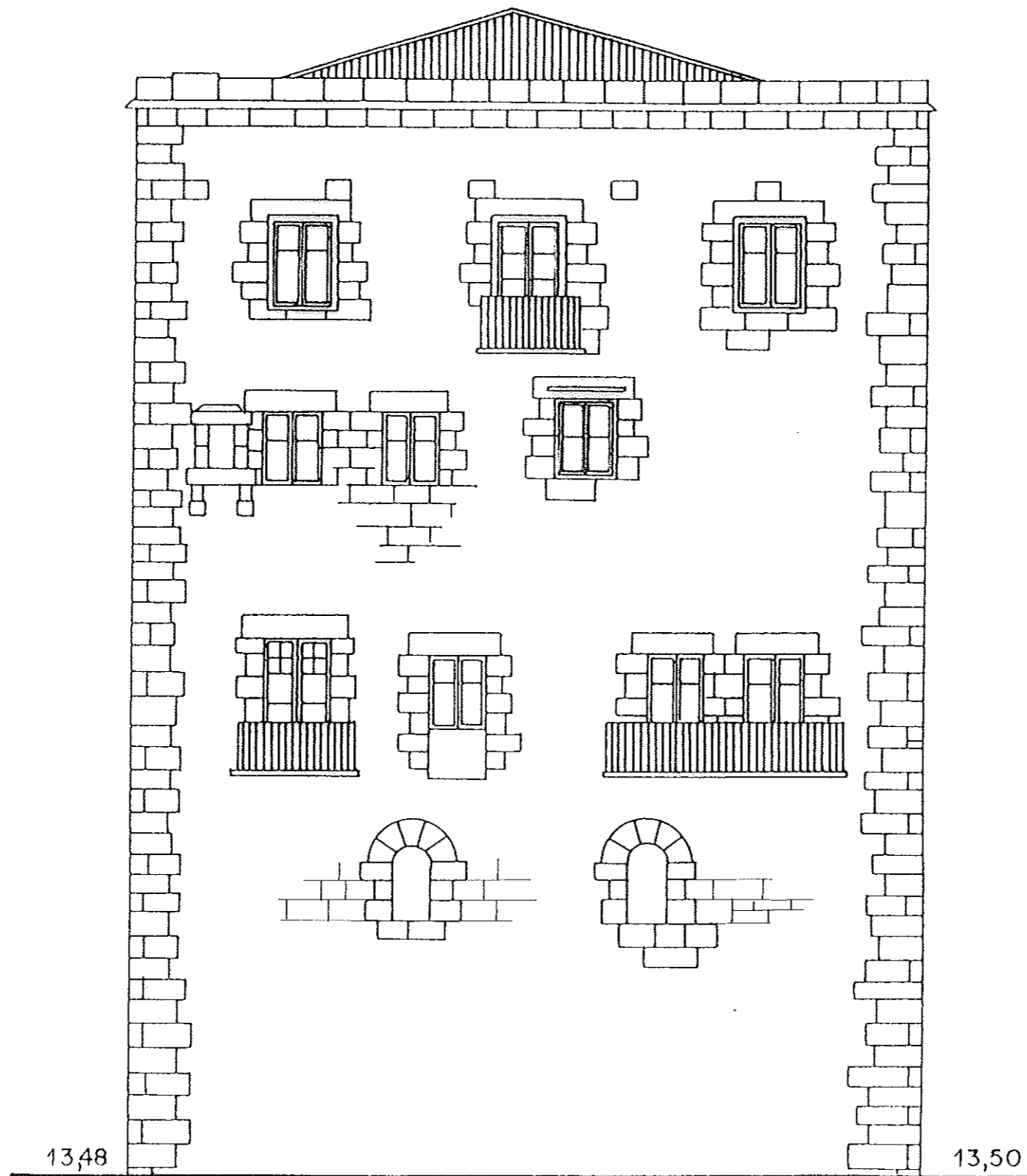


plano nº 5

alzado lateral · sur

F. López-Roldán · J. Ubarrechena
0m. ————— 10m.

MORRONTXO



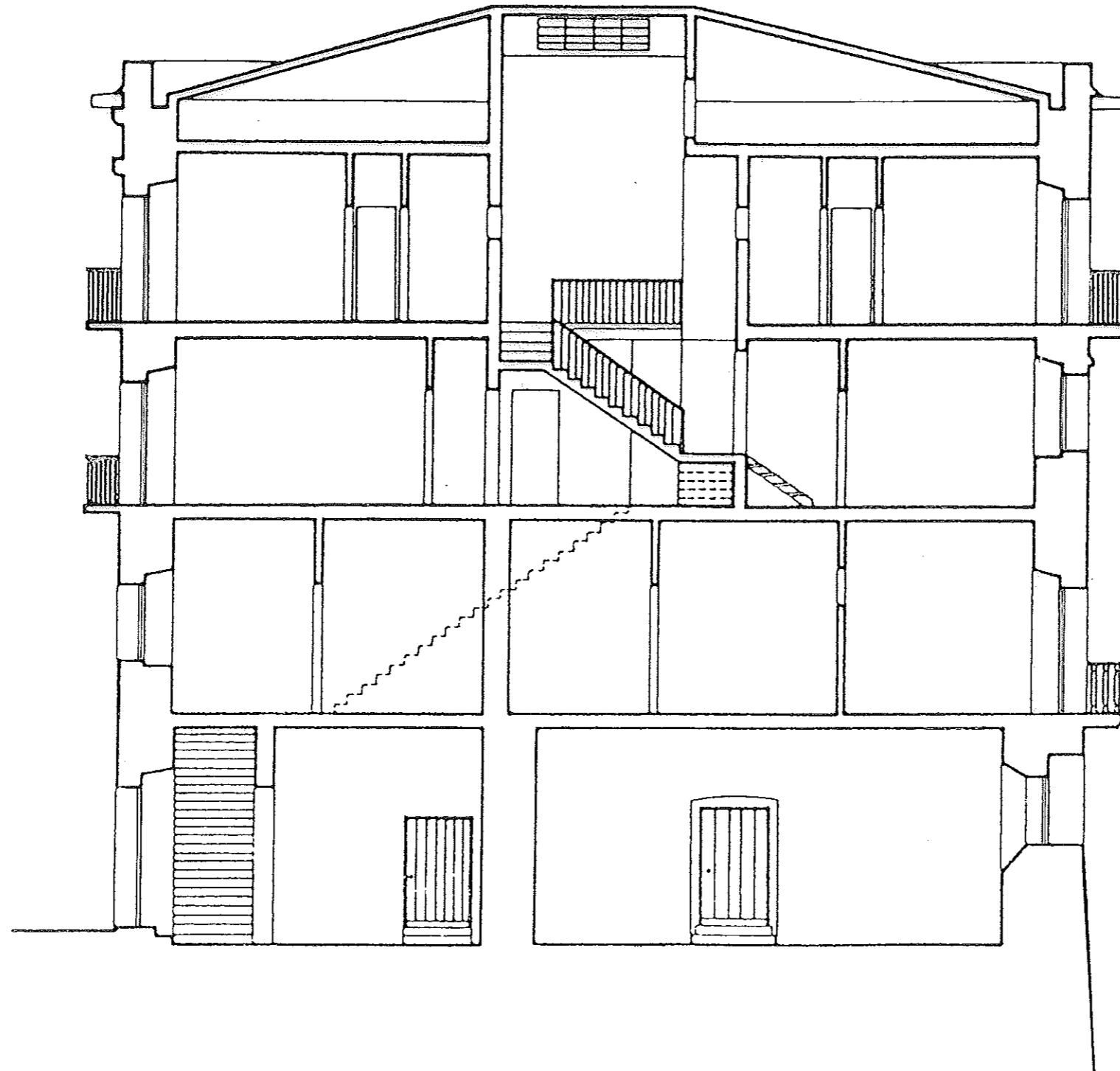
plano nº 6

alzado trasero · oeste

F. López-Roldán · J. Ubarrechena



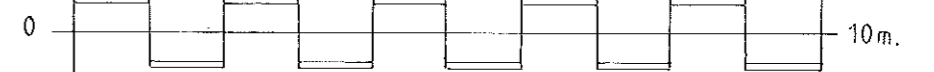
MORRONTXO



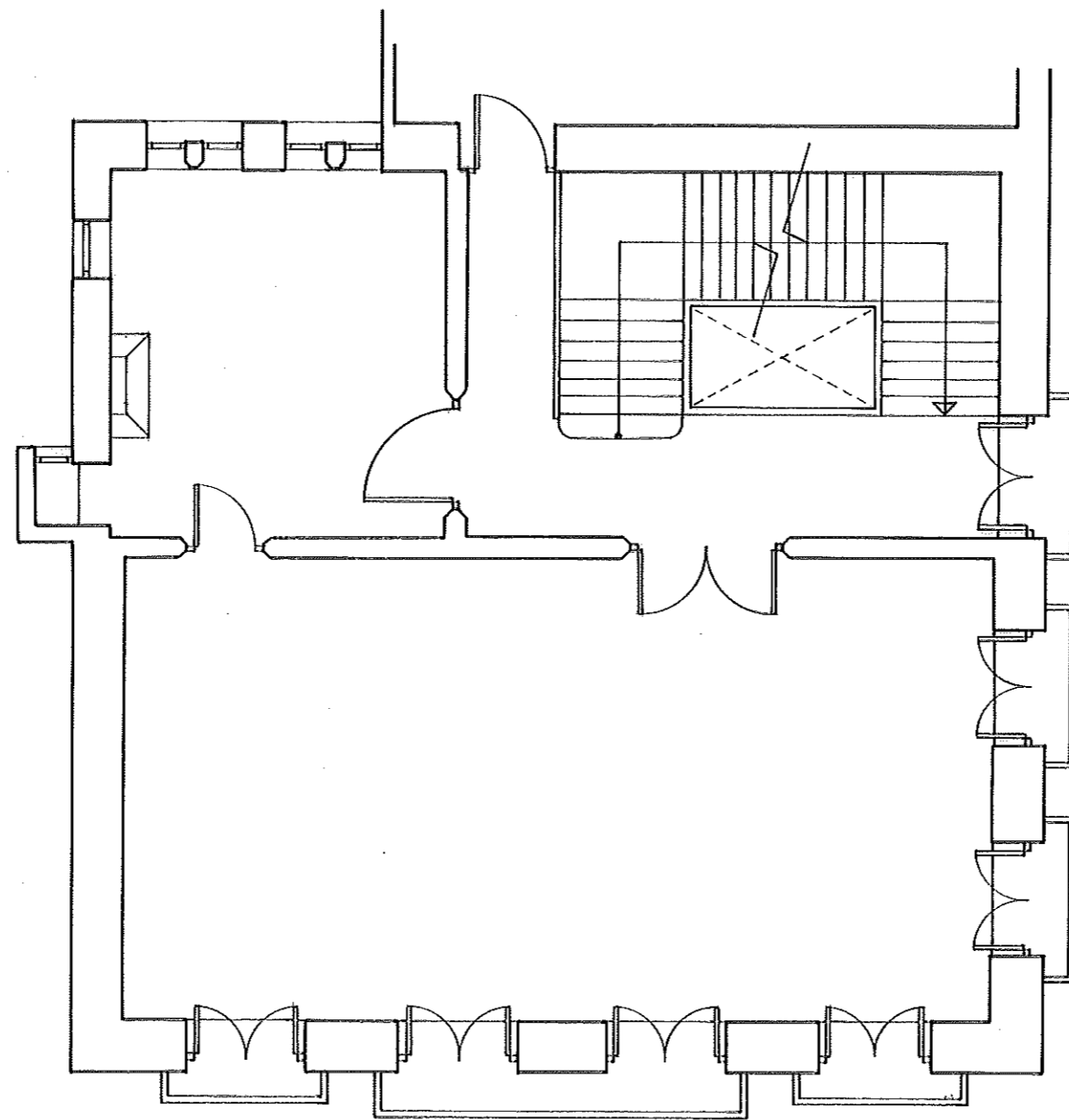
plano nº 7

sección longitudinal

F. López-Roldán · J. Ubarrechena



CASA CONSISTORIAL



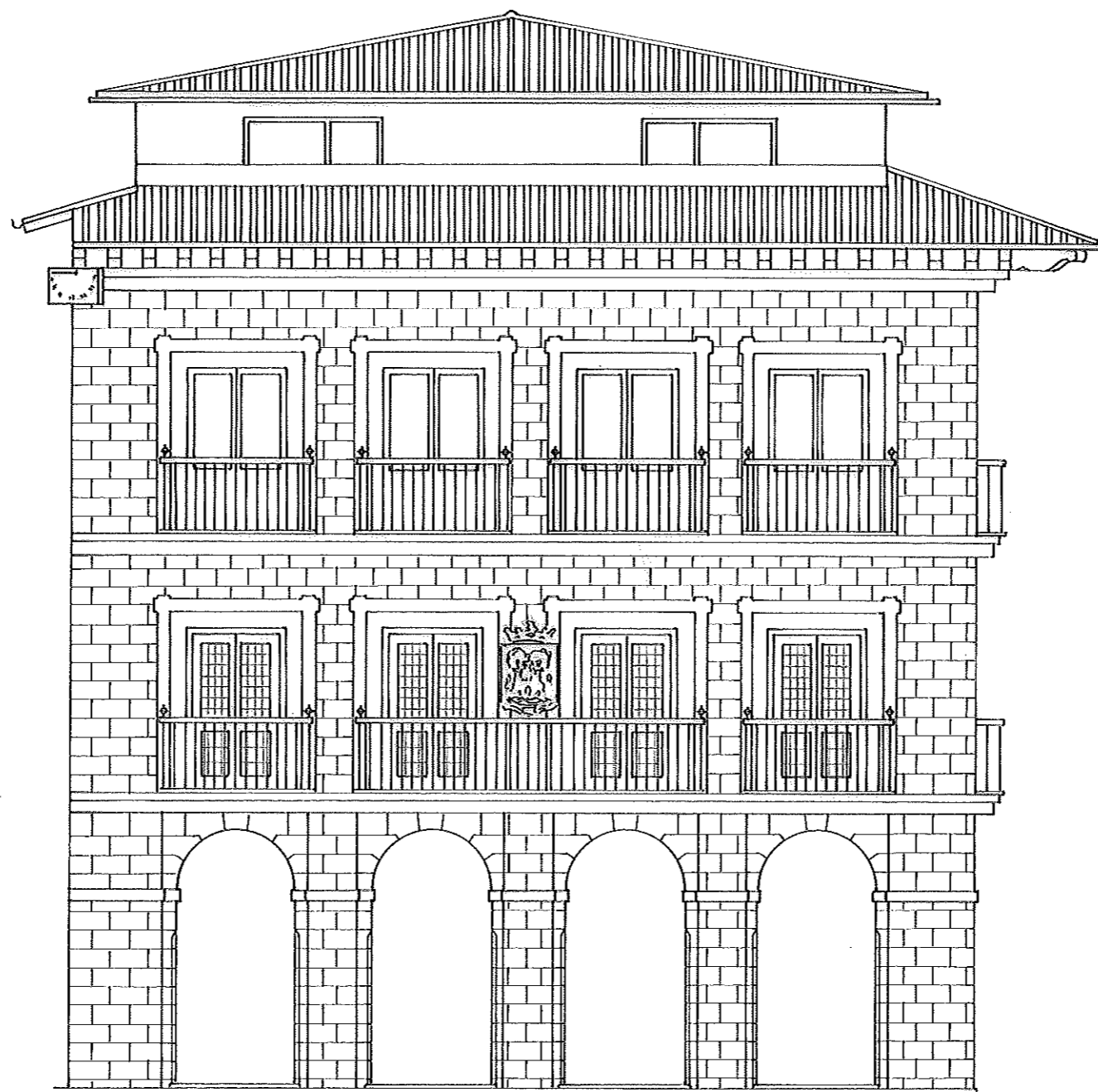
planta primera

plano n°9

F. López-Roldán · J. Ubarrechena



CASA CONSISTORIAL



sur · alzado · Herriko emparantza

plano n° 10

F. López-Roldán · J. Ubarrechena



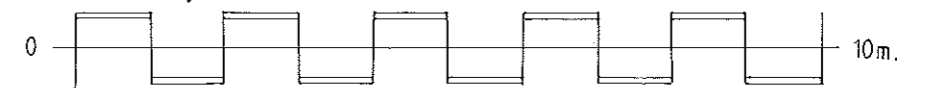
CASA CONSISTORIAL



alzado lateral · este

plano n°11

F. López-Roldán · J. Ubarrechena



CASA CONSISTORIAL



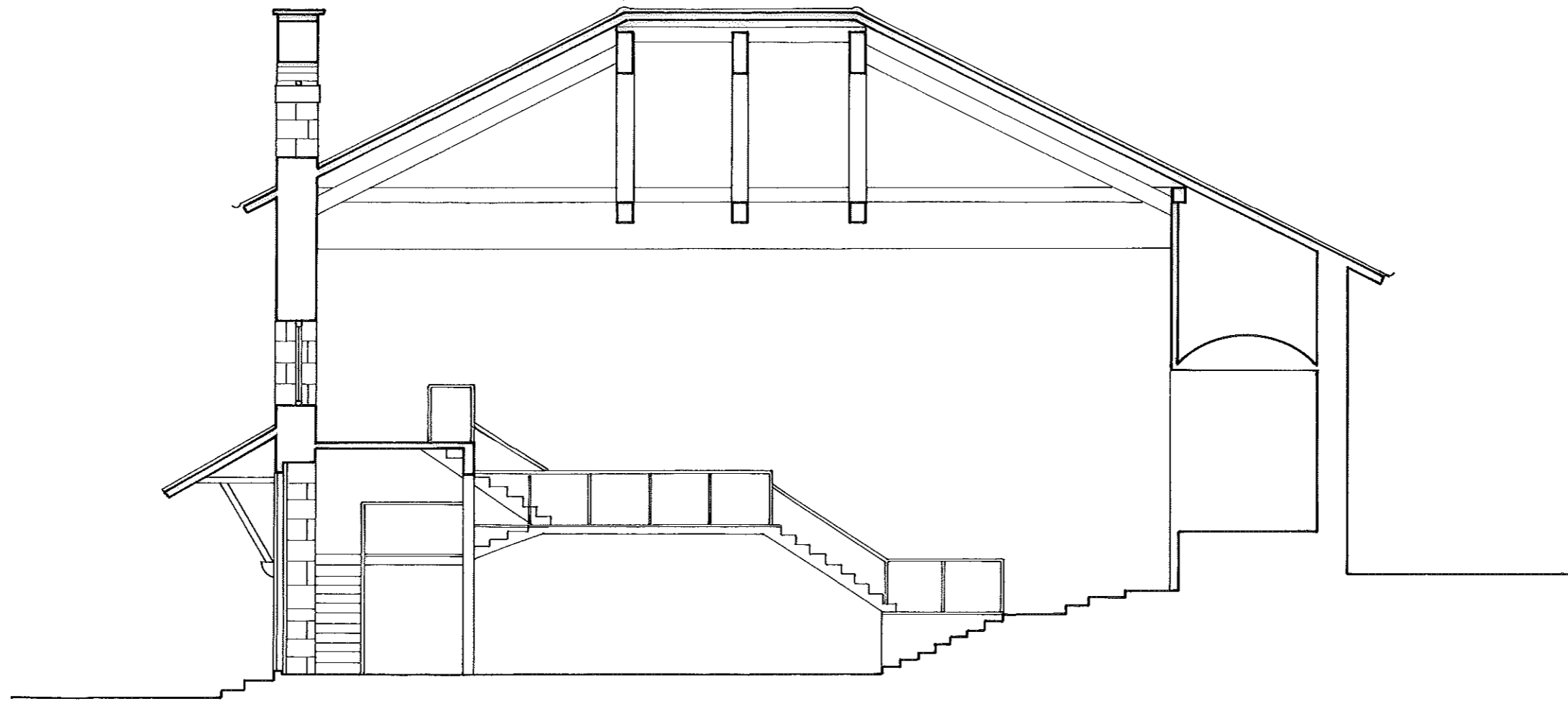
seccion longitudinal

plano nº12

F. López-Roldán • J. Ubarrechena



ERMITA DE LA MAGDALENA

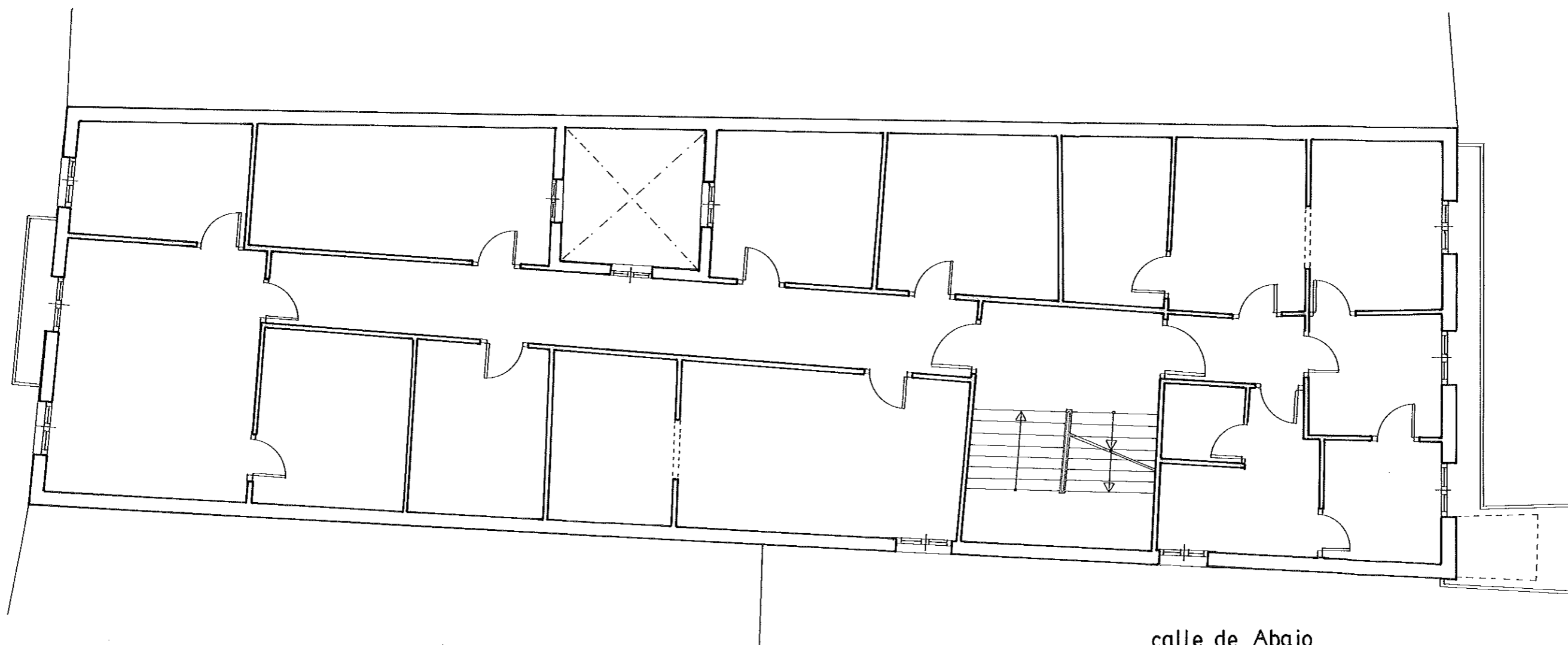


plano n° 27

seccion longitudinal

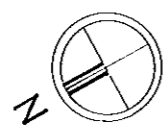
F. López-Roldán · J. Ubarrechena
0m. 10m.

PALACIO DE ZUBIAURRE



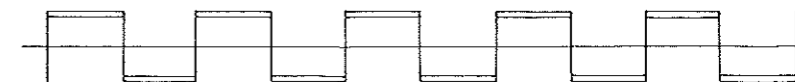
calle de Abajo

plano n°14

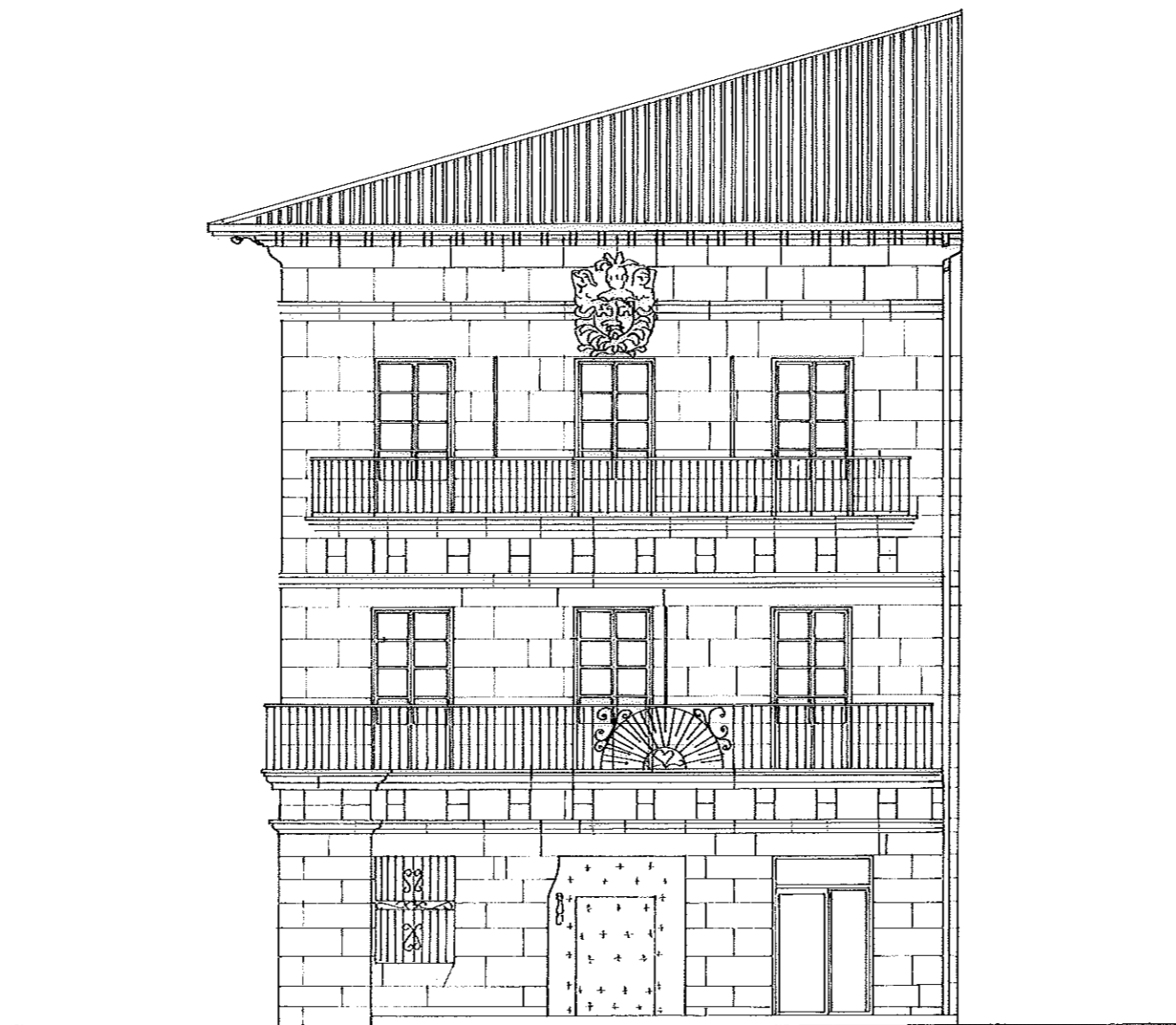


planta tipo

F. López-Roldán · J. Ubarrechena



PALACIO DE ZUBIAURRE



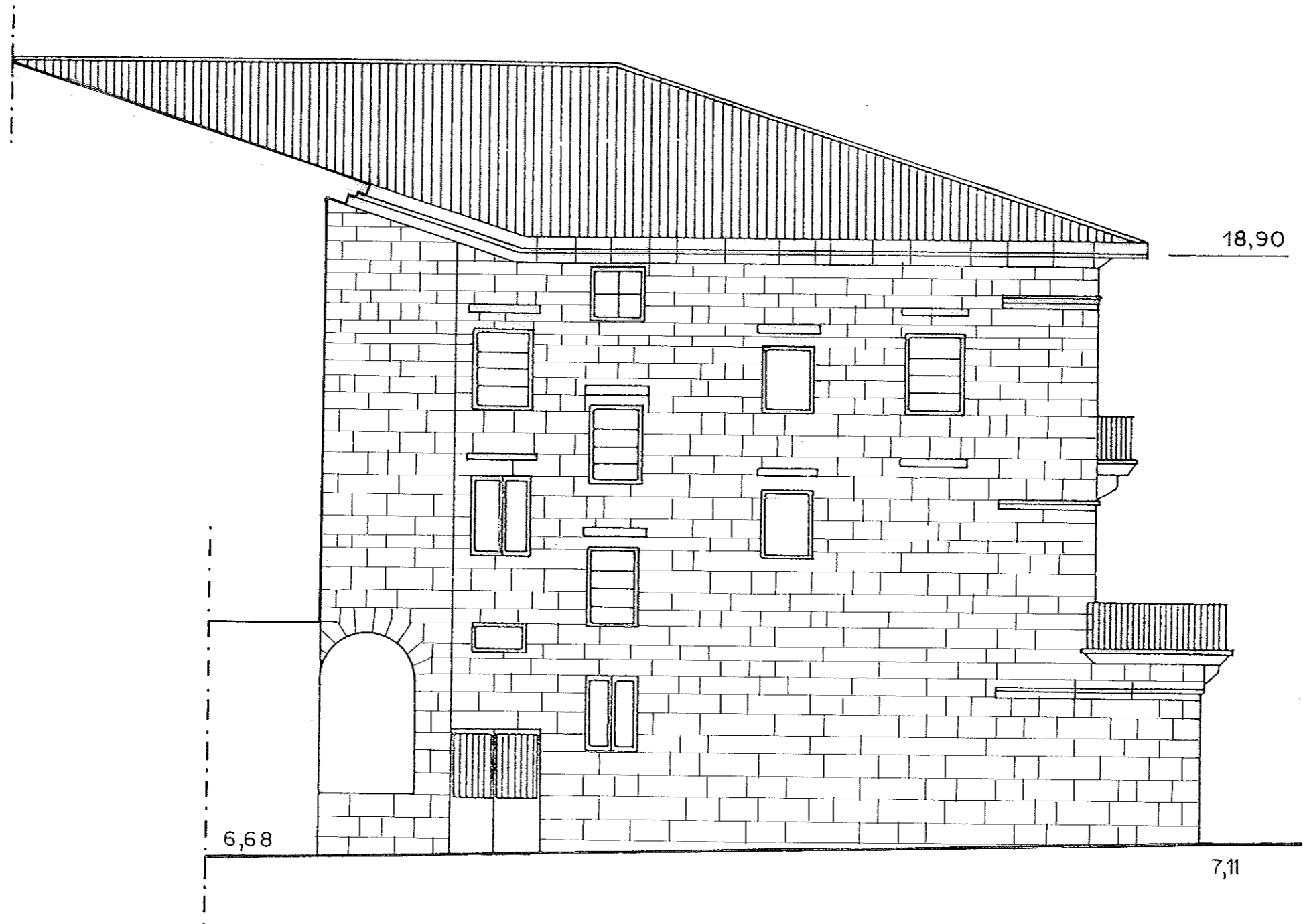
plano n°15 alzado principal · sur

c./ SantaClara

F. López-Roldán · J. Ubarrechena



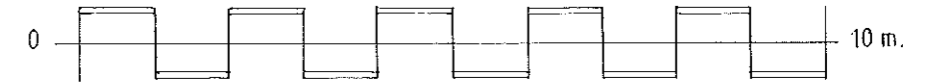
PALACIO DE ZUBIAURRE



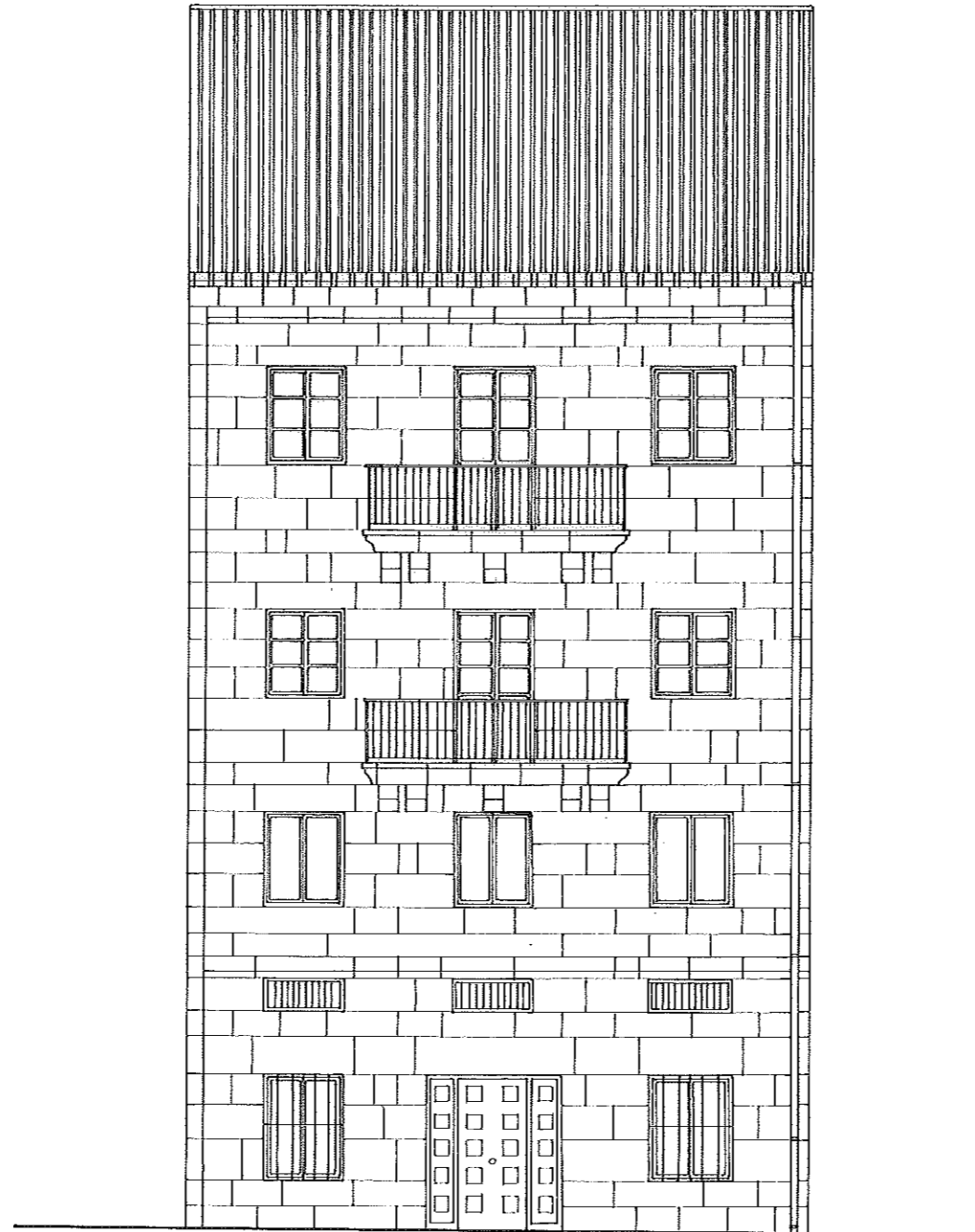
plano nº 16

alzado lateral · oeste

F. López Roldán · J. Ubarrechena



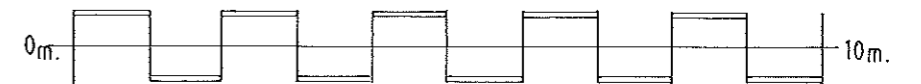
PALACIO DE ZUBIAURRE



alzado trasera · norte
plano n° 17

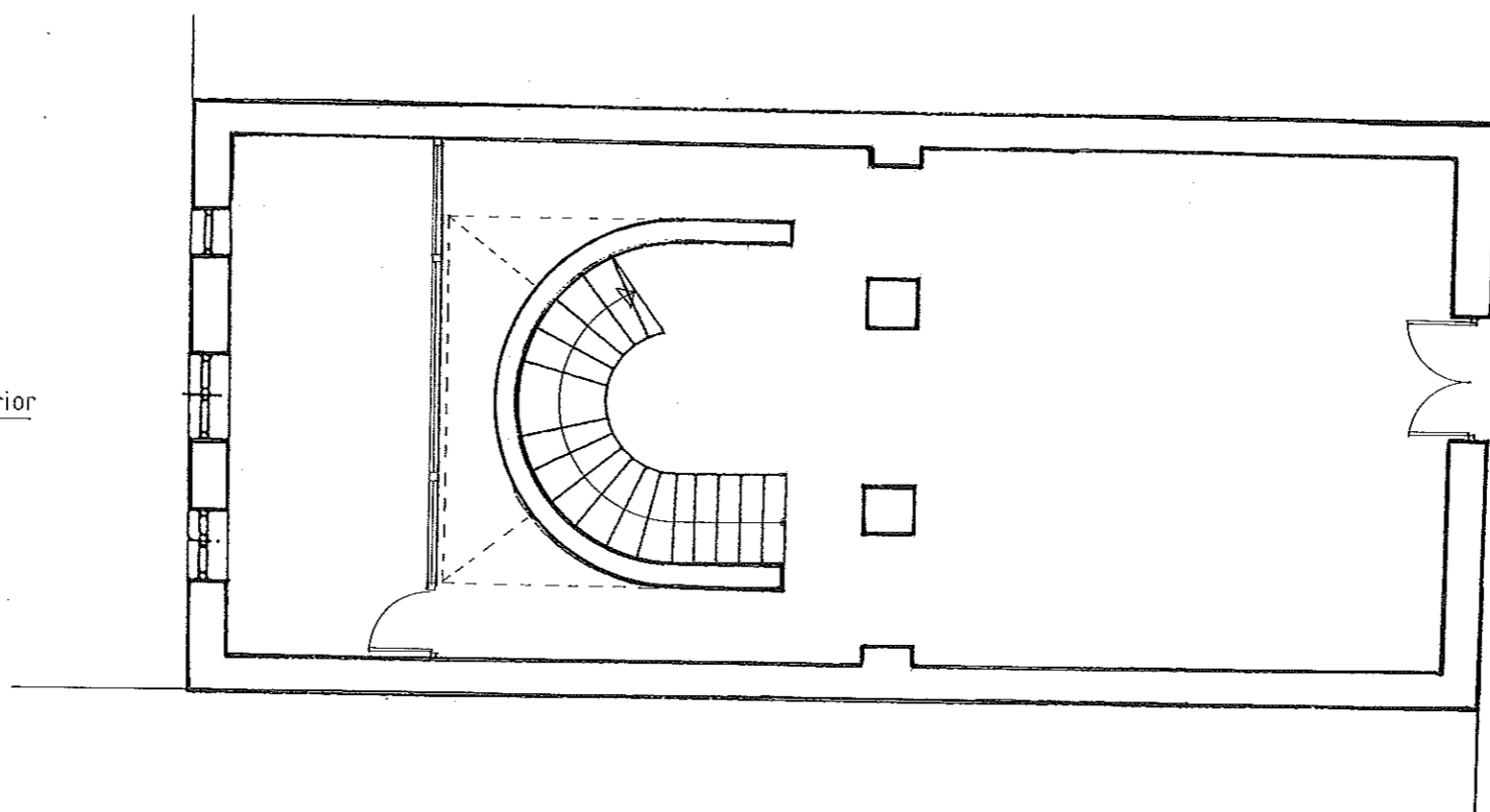
Alameda de Gamón

F. López-Roldán · J. Ubarrechena



CASA DEL CAPITAN

patio interior

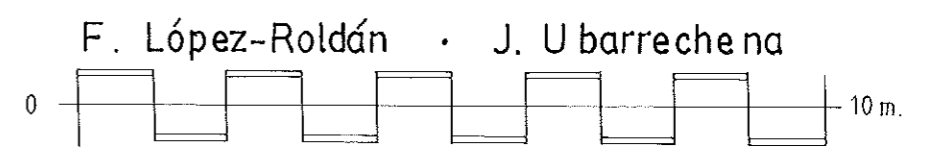


calle capitaneana

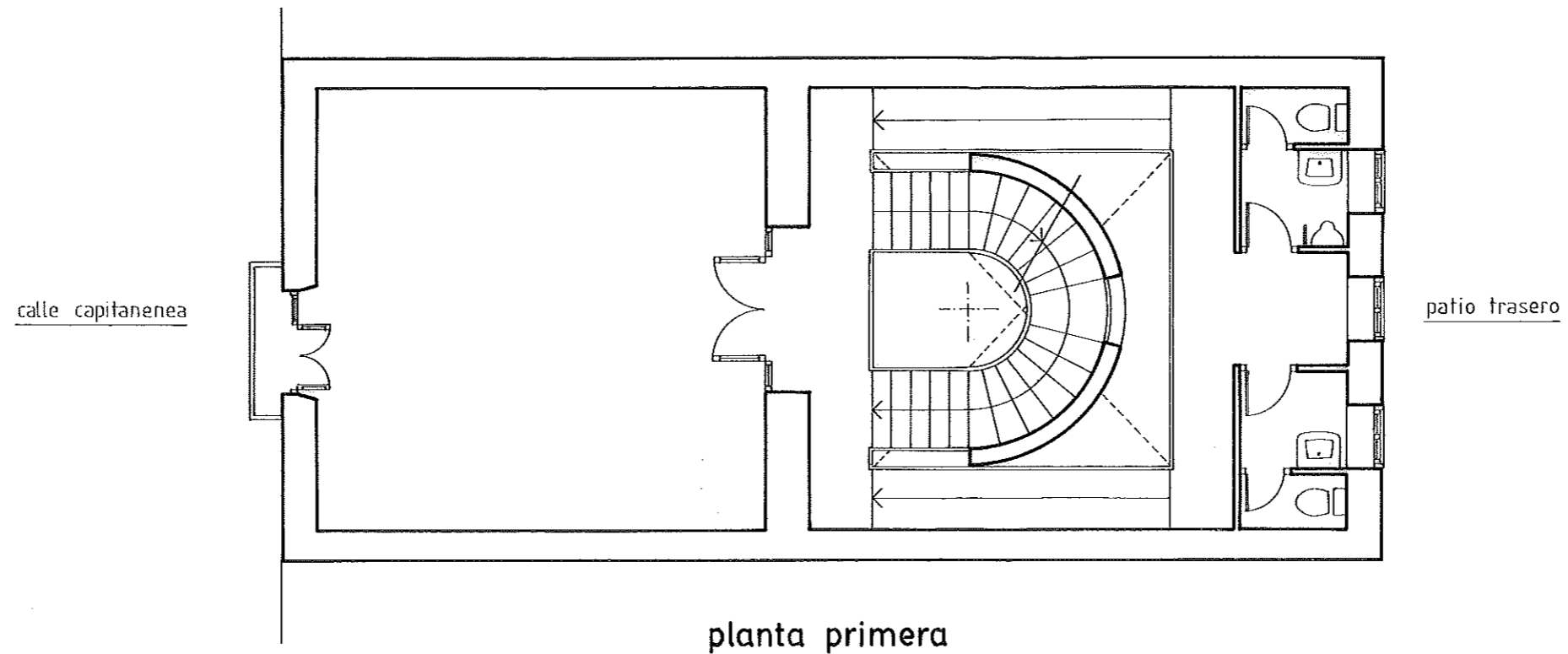
plano nº 19



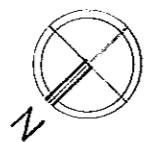
planta baja



CASA DEL CAPITAN

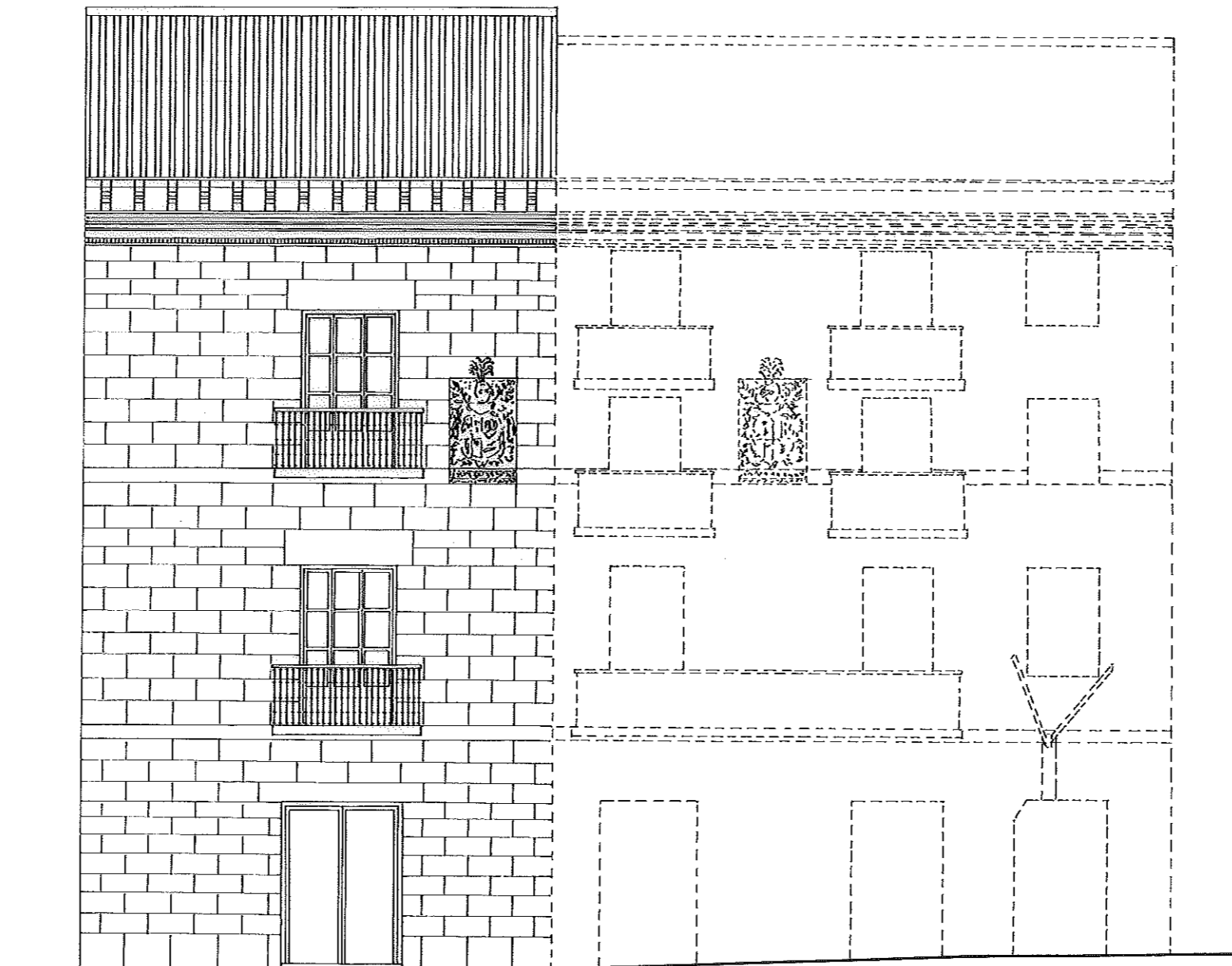


plano n° 20



F. López-Roldán · J. Ubarrechena
0 ————— 10m.

CASA DEL CAPITAN



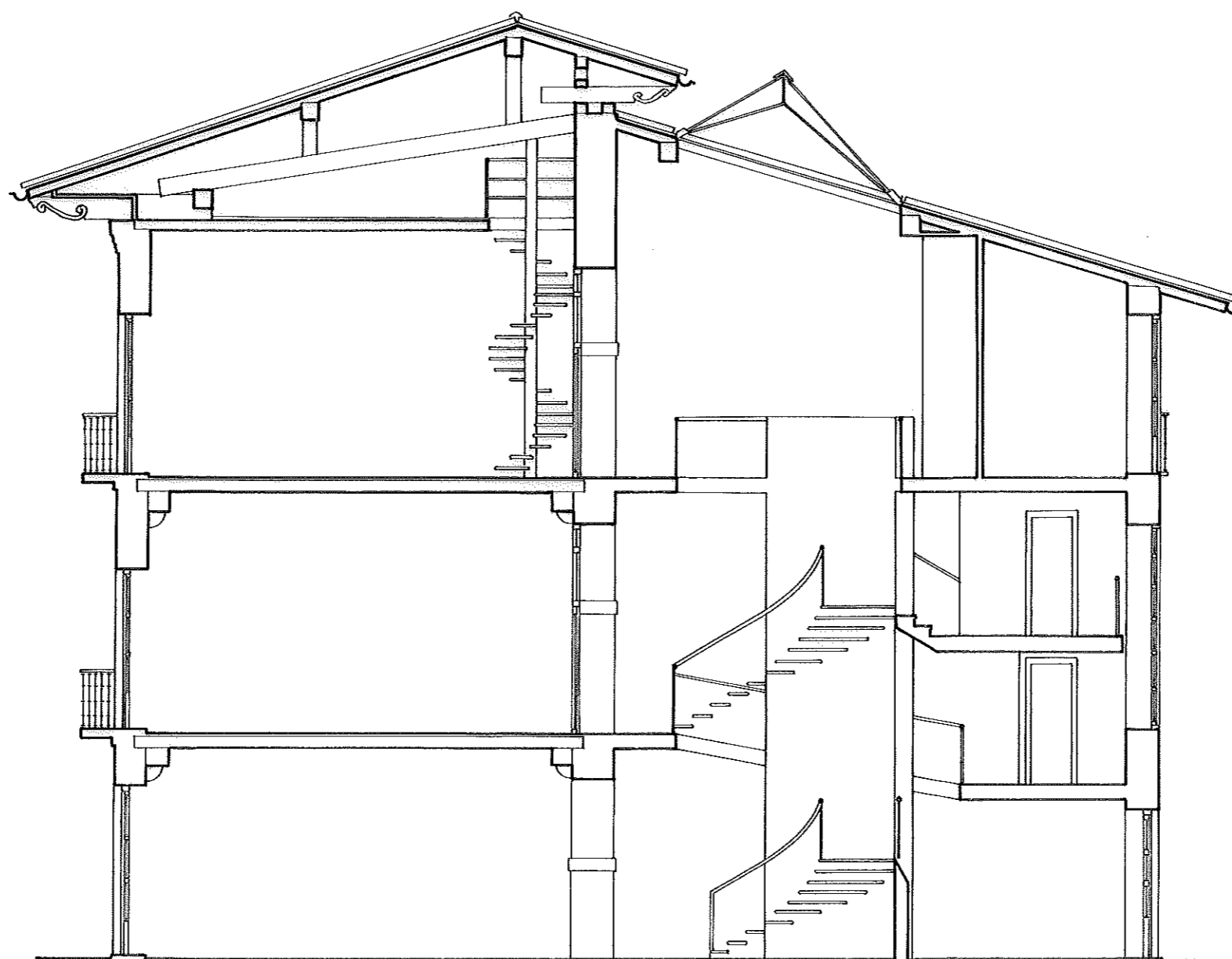
c./capitanenea

plano nº 21

alzado principal · oeste

F. López-Roldán · J. Ubarrechena
0 10 m.

CASA DEL CAPITAN



sección longitudinal

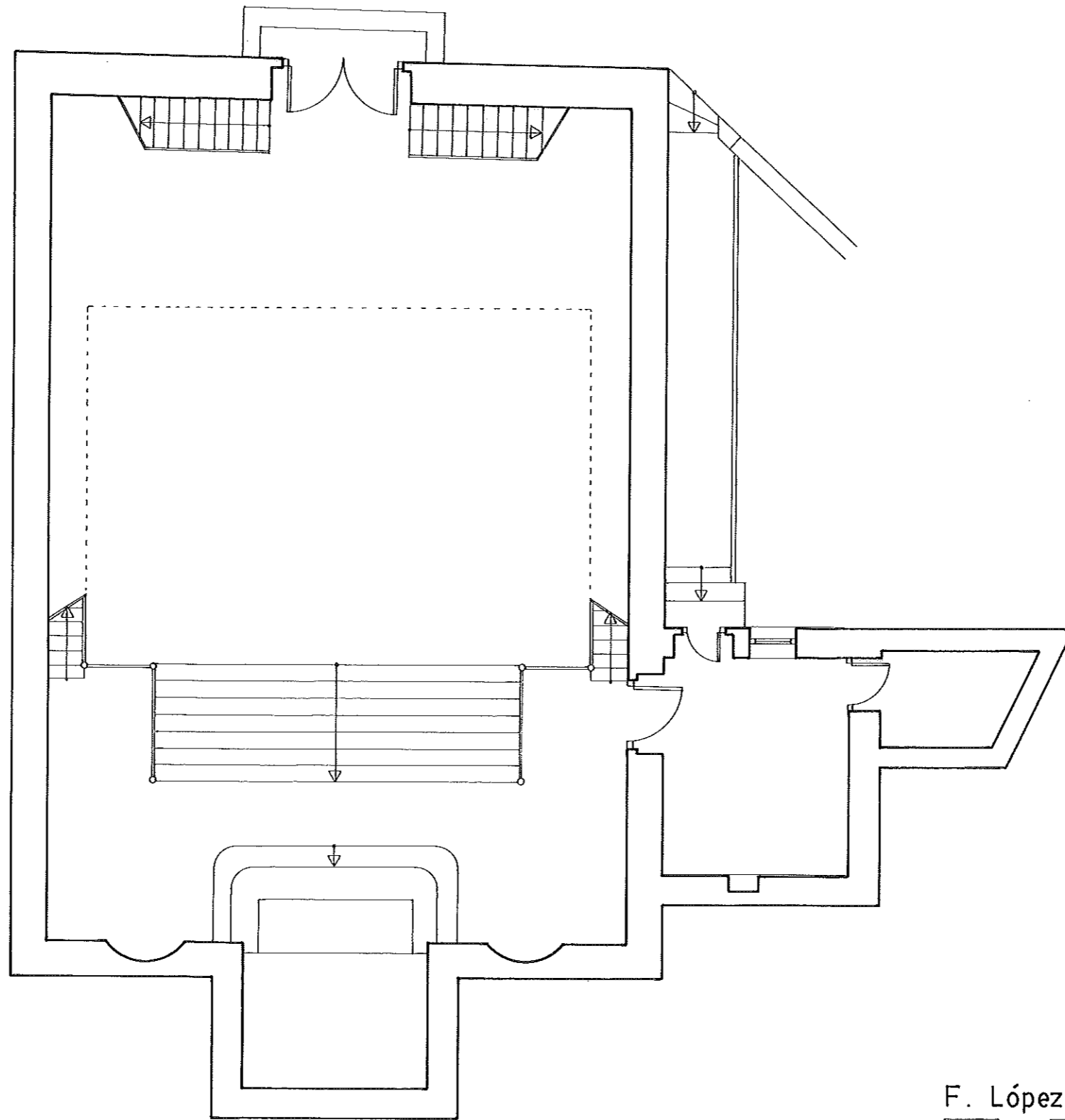
plano n° 22

F. López-Roldán · J. Ubarrechena



ERMITA DE LA MAGDALENA

c./María de Lezo

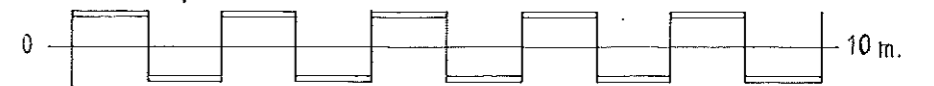


plano nº 24

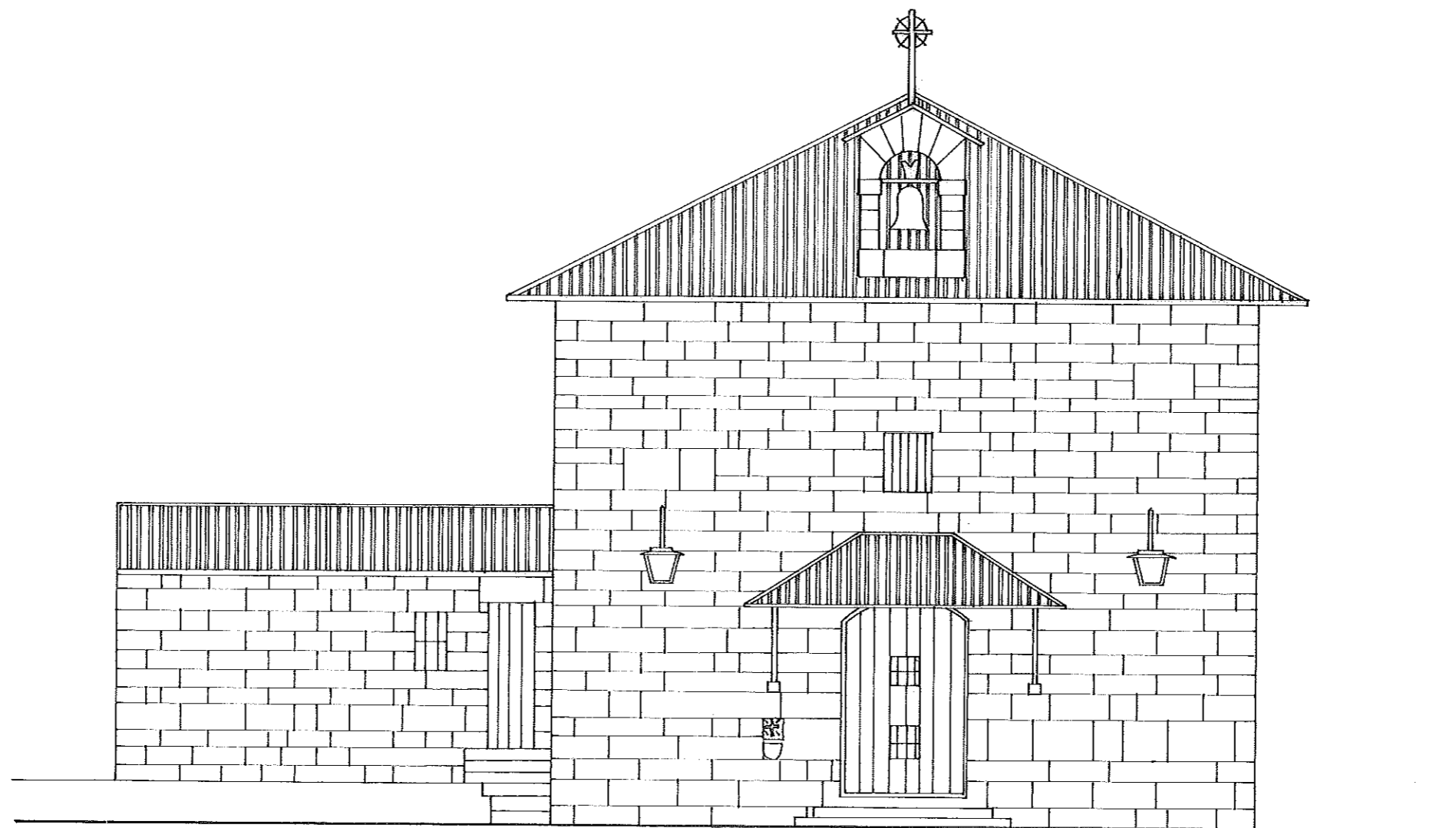


planta

F. López-Roldán · J. Ubarrechena



ERMITA DE LA MAGDALENA



plano nº 25

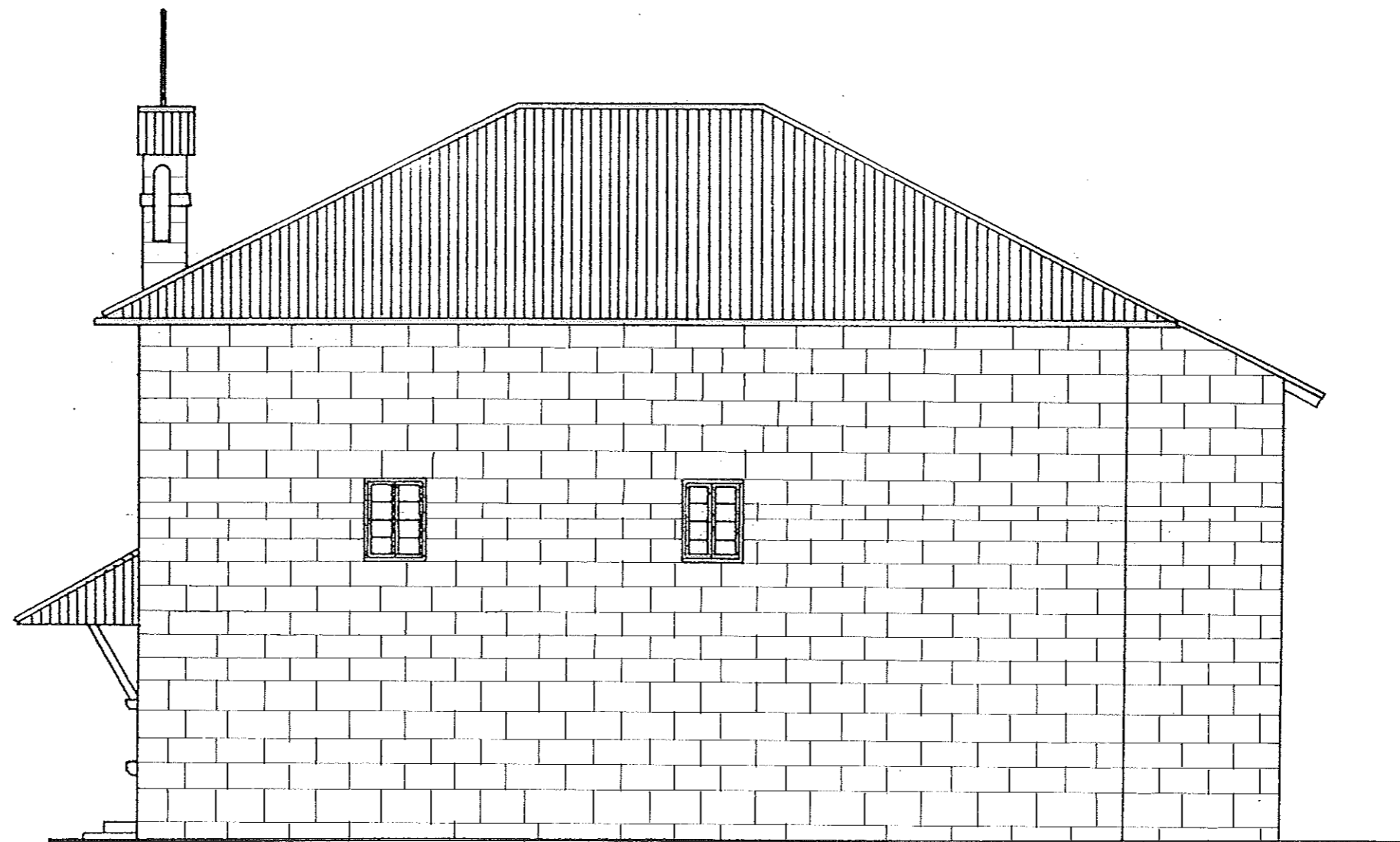
alzado principal · oeste

c.\ María de Lezo

F. López-Roldán · J. Ubarrechena



ERMITA DE LA MAGDALENA



plano nº 26

alzado lateral · sur

F. López Roldán · J. Ubarrechena

